

Appendix a

Transforming Care Fast Track – Briefing to Health and Wellbeing Board

**Beverley Flowers, Interim Chief Executive,
East and North Hertfordshire CCG**

Transforming Care

- Individuals in Hertfordshire with learning disabilities and/or autism who may have:
 - A mental health condition but not limited to severe anxiety, depression or a psychotic illness
 - Self-injurious or aggressive behaviour
 - A specific neurodevelopmental syndrome, with complex life-long health needs
- Behaviour which may put themselves or others at risk Other health or social care needs and disadvantaged backgrounds
- Been in inpatient care for a significant period of time (often decades), having not been discharged when NHS campuses or long-stay hospitals were closed

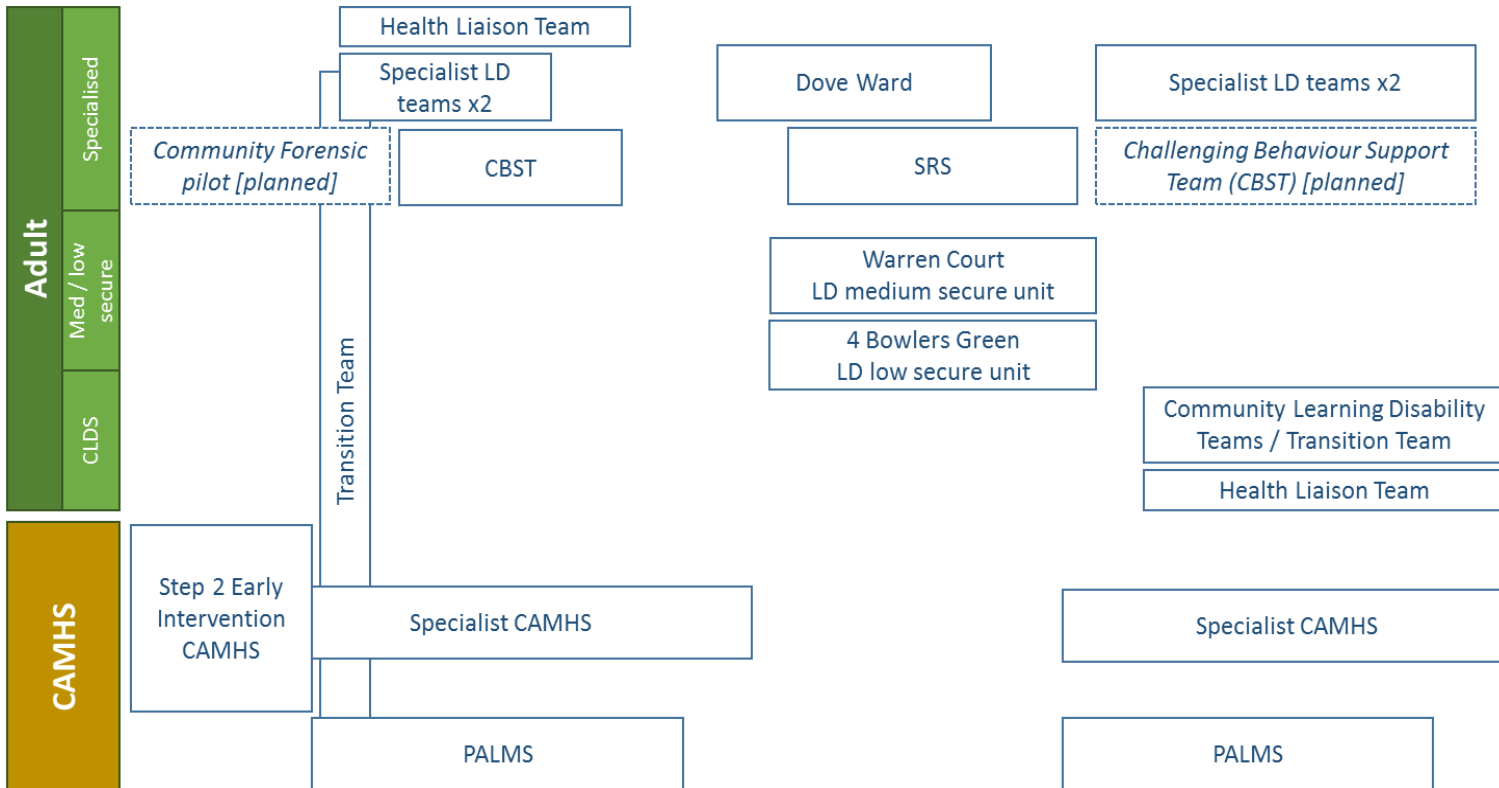
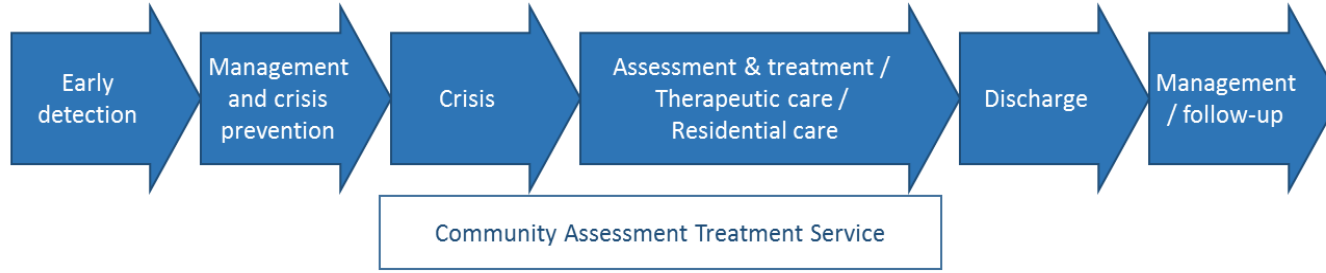
Fast Track Pilot

- The Fast Track areas are six selected sites across the North of England and Midlands and East to help achieve the ambition set out in the Learning and Disability Transforming Care programme
- To ensure that more services are provided in the community and closer to home, rather than in hospital settings.
- The five Fast-Track areas will bring together organisations across health and care.
- Hertfordshire awarded £1.2m to accelerate service redesign and pilot new projects

Hertfordshire Background

- Low bed base
 - Reduced inpatient beds LD rehab beds from 46 to 10, but this makes savings more challenging
 - Monies invested in Specialist Learning Disability Service Community Assessment and Treatment Service.
 - Resettlement of 22 people with long history of inpatient care through Positive Moves teams
 - Care and Treatment Reviews carried out for all Transforming Care cohort, with plans in place for every individual in that cohort
 - System for Pre-admission CTR's in place

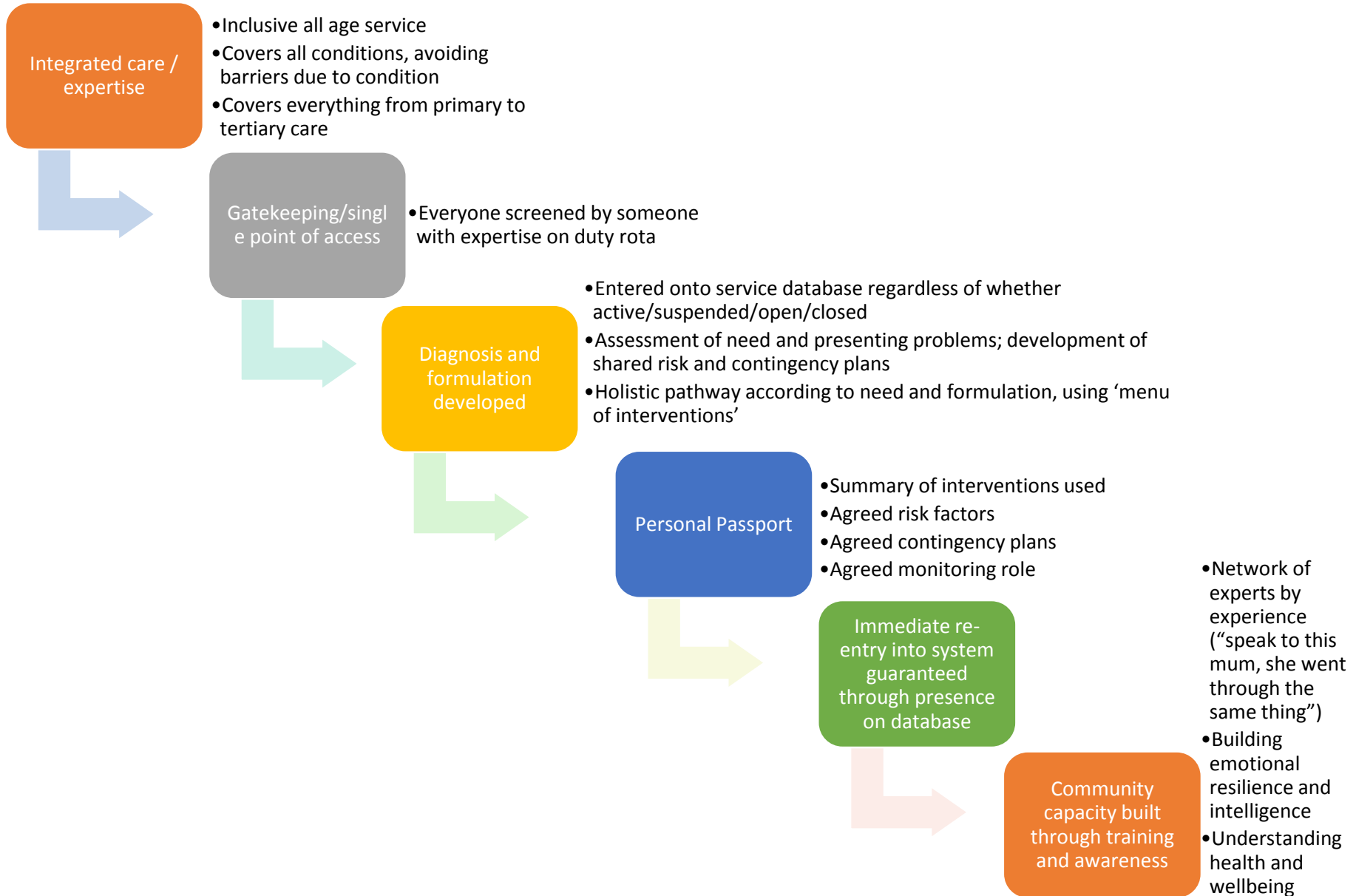
Current provision



LD Service Redesign – Hertfordshire Vision

- Integrated and person-centred
- Inclusive
- Preventative
- Intelligent
- Lifelong, all age pathway

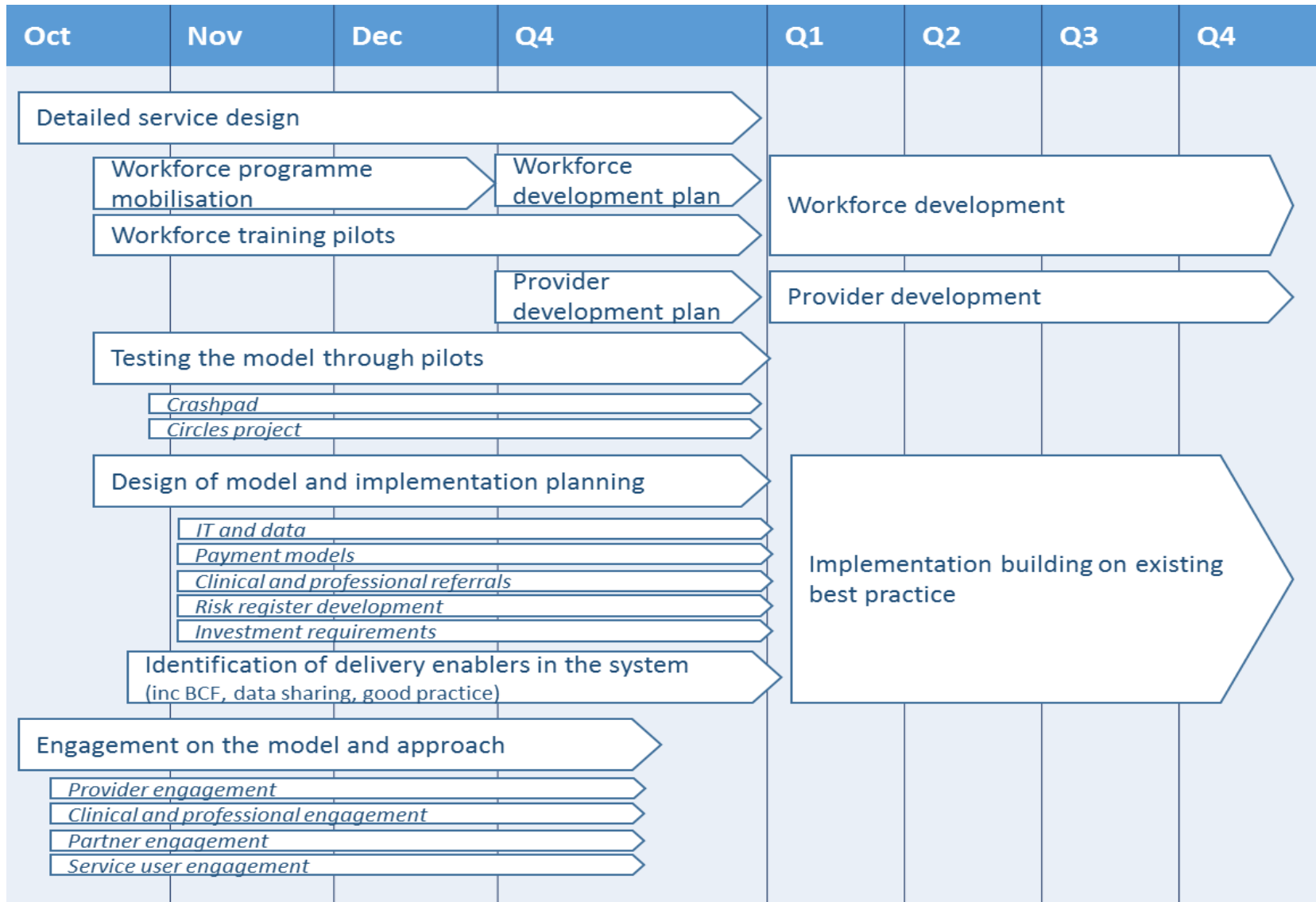
Model of Care – Common Lifelong Pathway



Pilots

- **£1.27m secured** (non-recurrent) for Hertfordshire
- **Circles of Support** – to support people with LD and a Forensic history in the community
- **Crash pad** – preventative, avoidance of inappropriate hospital admissions
- **Crisis Support team** – similar model to Home Treatment teams
- **Workforce development/training**
- **Creative Rehab** – for inpatient/community

High-level Plan



Governance

 Governance and reporting

 Existing groups

 Proposed groups

